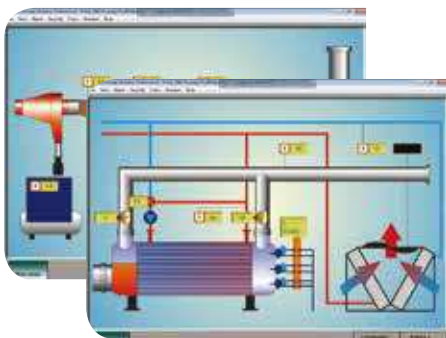
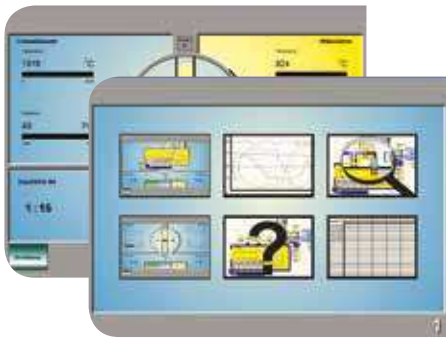


DFW Operating System



Combining different technologies

Control and Operation

DFW Europe developed the OMR (*Operating, Monitoring, Reporting*) operating and control system in order to simplify how the entire process is operated, to improve monitoring and also as a method of storing data. This control system has the necessary technology and options to meet all your requirements, both today and in the future.

Operating

DFW Europe's OMR (operating, monitoring, registration) operating system consists of two separate systems, a process control system and an operating system. On the one hand, we opted for the most accurate and reliable technology for process control. On the other hand, we opted for the best operation and visual display technology that keeps the operator fully informed about the cremation process.

Combining these two technologies resulted in the following qualities:

- Extremely accurate control features;
- Fuel-saving;
- Well-organised and clear operator screen;
- Modular construction system;
- Various options for scaling up.

Monitoring

We are able to monitor the cremator, the AIM and all the recorded parameters remotely, via a phone or modem connection. This results in our clients receiving a high quality efficient level of service.

Reporting

The DFW Control system is also equipped with various report sheets capable of generating daily, monthly and annual reports. It is also capable of generating site-specific summaries you may want, such as environmental reports and fault/exception lists.