

## DFW 4000 Cremator

### *A clever application of technology*

#### Compact

The *DFW 4000* is the smallest and most compact cremator in the DFW range. The meticulously chosen dimensions of the *DFW 4000* make this cremator extremely well suited to crematoria with a capacity of circa 300 to 600 cremations a year. To reduce installation time, the cremator is supplied fully assembled.

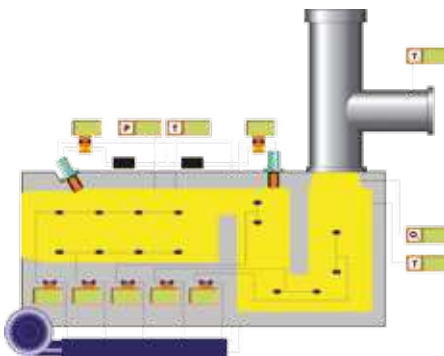
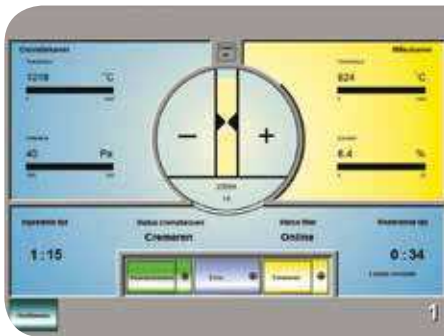
#### User-friendly

The unique *DFW operating system* makes it extremely simple to operate the cremator and any filter systems subsequently incorporated. The fully automatic cremation process is initiated and displayed after a few simple steps involving the touch-screen. The current real time process values are directly visible on the touch-screen. Any adjustments in the parameters of the cremation process can easily be made using the same touch-screen. We can also assist you remotely via a modem connection in the event that adjustments need to be made to the cremation process (see *Operating System leaflet*).

#### Economic

The design and control logic incorporated within the *DFW OMR Operating System* combines the continuous reliable measurements of oxygen, temperature and draught to ensure a well-controlled optimised cremation is consistently achieved. As a result gas consumption is minimised and as a consequence is extremely economical. The controlled cremation process keeps maintenance costs to a minimum.

The use of high quality materials, low investment costs and good performance in respect of gas consumption are what make the *DFW 4000* the perfect choice for crematoria with a low capacity.



## Technical data DFW 4000 Cremator

### Dimensions:

Total oven	1,700 x 2,600 x 5,200 mm (wxhxl)
Cremation chamber	920 x 800 x 2,300 mm (wxhxl)
Time in post-combustion chamber	> 1.5 sec.
Oven door	970 x 780 mm (wxh)
Total weight oven	13,000 kg

### Fuel:

	<b>Natural gas / propane</b>
Temperature post-combustion chamber	> 800/850 °C
Temperature of cremation chamber before insertion	± 450 °C

### Capacity:

Number of cremations per 8-hour working day	4
Cremation time	between 90 and 120 minutes
Maximum weight coffin	150 kg
Maximum dimensions coffin	950 x 740 x 2,100 mm (wxhxl)
Combustion air	± 1,500 Nm <sup>3</sup> /h

### Control:

DFW Europe operating system	
Thermocouples	2 x NiCrNi Type K
O <sup>2</sup> level post-combustion chamber	6% minimum
Oxygen measurement	Xendos 2700
Under pressure in cremation chamber	10-50 Pascal