

DFW 100 Pet Cremator



Compact and reliable

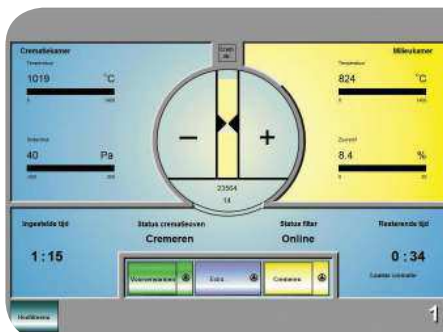
Compact

The *DFW 100* fulfils all requirements for an environmentally friendly and 'humane' method for cremating domestic pets. The secondary chamber has been constructed so that the hot flue gasses are used to heat the floor of the cremator. The time that the combustion products remain in the secondary chamber has been adjusted to achieve complete combustion and an optimum residence time. This results in considerably cleaner flue gases and reduces gas consumption to a minimum.

The *DFW 100* is designed for a capacity of 100 kg per process. The incinerator is supplied fully assembled, with all necessary control and regulation equipment, in order to limit installation time. The standard model *DFW 100* is supplied with a six metre high chimney.

Easy Operation

The unique *DFW operating system* makes operating the cremator extremely easy. The fully automatic cremation process is initiated and displayed after a few simple actions on the touch-screen. Any adjustments in the cremation process can easily be made using the same touch-screen. We can also assist you remotely via a modem connection should any adjustments need to be made in the cremation process.



Economic

The extremely reliable continuous measurement of oxygen, temperatures and any vacuum effect results in a constant process of cremation. As a result gas consumption with the *DFW 100* is minimised and as a consequence extremely economical. The controlled cremation process keeps maintenance costs to a minimum.

High quality, low investment and good efficient performance, in respect of gas consumption, make the *DFW 100* a good choice for animal crematoria.



Technical data DFW 100

Dimensions:

Complete oven (single-end)	1,640 x 2,142 x 3,470 mm (wxhxl)
Cremation chamber	920 x 715 x 1,370 mm (wxhxl)
Duration of post-combustion	> 1.5 seconds
Oven door	1,000 x 650 mm (wxh)
Total weight oven	9,500 kg

Fuel:

	Natural gas / propane
Average fuel consumption	Depending on inserted weight
Temperature in post-combustion chamber	> 800/850 °C
Temperature of cremation chamber before charging	± 400 °C

Capacity:

Number of cremations	Depending on inserted weight
Maximum inserted weight	100 kg
Capacity	< 50 kg/h
Combustion air	± 750 Nm ³ /h

Controls:

DFW Europe control system	DFW Europe's O.M.R. (operating, monitoring, registration) operating system
Thermocouples	2 x NiCrNi Type K
O ² level post-combustion chamber	6% minimum
Oxygen measurement	Servomex Xendos 2700
Under pressure in cremation chamber	10-30 Pascal