

DFW 6000 Cremator

When quality and reliability are essential

Revolutionary

The DFW 6000 Cremator is an extremely compact cremator and the most commonly used of the entire DFW range. The gas consumption of the DFW 6000 has been reduced to a minimum by locating the post-combustion chamber around the cremation chamber. The DFW 6000 cremator is a hotstart cremator that can be supplied as a 'single-end' or 'double-end' version. This cremator is ideal for crematoria with an annual capacity of more than 800 cremations. In order to reduce installation time, the cremator is supplied fully assembled.

Automatic Charging Bier

The DFW 6000 is a hot-start cremator and to ensure the safety of the operator it is supplied with a fully automatic, integrated Charging Bier (AIM). The DFW 6000 is designed so that the AIM can be fully housed within the cremator. This means the AIM can be entirely withdrawn from view when it is not being used (see Automatic Charging Bier leaflet).

Easy Operation

The unique DFW OMR (Operation, Monitoring and Reporting) operating system makes it extremely easy to operate the cremator and any filter systems subsequently incorporated as well as the AIM. The AIM can be activated and the coffin automatically transferred by a few simple actions on the touch-screen. The cremation process can then start. These actions are stored in the system and displayed on the touch-screen. Any adjustments in the parameters of the cremation process can easily be made using the same touch-screen. We can also assist you remotely via a modem connection should any adjustments need to be made in the cremation process (see Operating System leaflet).

Ash unit

An adjustable pull-out system brings the ash unit into an ergonomically safe position. This has made it considerably easier for operators to remove the ash container. The ease with which the operator can operate the cremator has now become an essential requirement.



Technical data DFW 6000

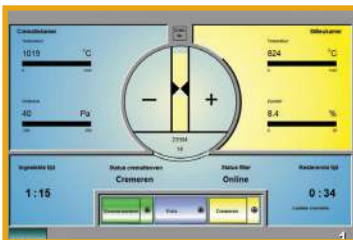
Economic

The extremely reliable continuous measurement of oxygen, temperatures and any vacuum effect results in a constant process of cremation. As a result gas consumption with the DFW 6000 is minimised making it extremely economical. The controlled cremation process keeps maintenance costs to a minimum.

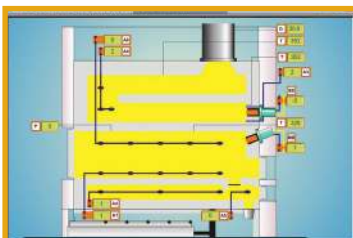
High quality, low investment costs and good efficient performance, in respect of gas consumption, make the DFW 6000 the right choice.



Automatic Charging Bier



Easy Operation



Well-organized

Dimensions:

Total oven single-end	2,300 x 3,100 x 4,225 mm (wxhxl)
Total oven double-end	2,300 x 3,100 x 4,050 mm (wxhxl)
Cremation chamber	1,100 x 800 x 2,500 mm (wxhxl)
Post-combustion chamber	3.05 m ³
Duration in post-combustion chamber	> 2 sec.
Oven door	1,100 x 780 mm (wxh)
Total weight oven	16,500 kg

Fuel:

Average gas consumption for 4 to 6 cremations	< 22.5 m ³ / cremation
Temperature post-combustion chamber	> 800/850 °C
Temperature cremation chamber before charging	800 °C

Natural gas / propane

Capacity:

Number of cremations per 8-hour working day	6
Cremation time between	75 and 90 minutes
Maximum weight coffin	250 kg
Maximum dimensions coffin	1,050 x 600 x 2,300 mm (wxhxl)
Combustion air	± 1,600 Nm ³ /h

Control:

DFW Europe Operating system	DFW Europe's OMR (operating, monitoring, and control) system
Thermocouples	NiCrNi Type K
O ₂ level post-combustion chamber	6% minimum
Oxygen measurement Xendos 2700	
Under pressure in cremation chamber	10-50 Pascal